



# total by verizon<sup>v</sup>

SEEKING NEW LOCATIONS

## Geographic Location

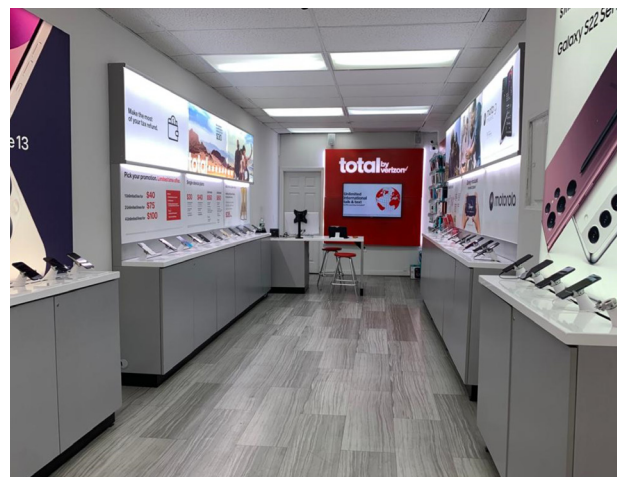
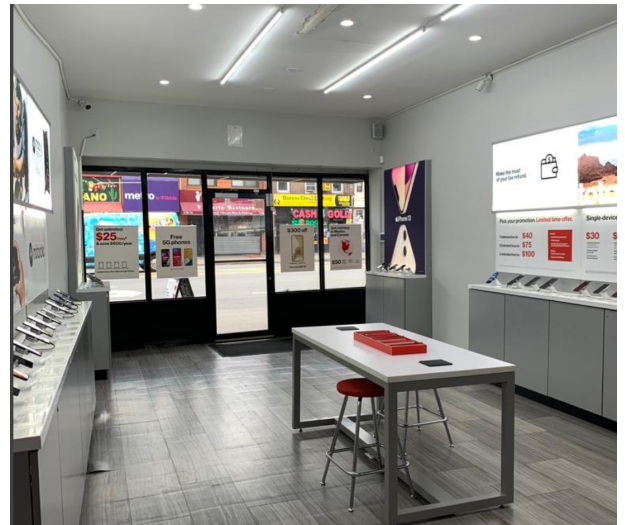
Pennsylvania/ New Jersey

## Required Building Size

1,000-1,200 Sq Ft

## Site Criteria

- High Traffic Retail Corridors
- Urban Street Retail
- Highly Visible Strip
- Freestanding



## GOLDFINE & COMPANY

Radnor Station Building #2  
290 King of Prussia Road, Suite 112  
Radnor, PA 19087

SUBMIT SITES TO

Josh Goldfine  
610-608-9152

Josh@Goldfineco.com